



THE OHIO STATE  
UNIVERSITY  
ALUMNI ASSOCIATION

# *Macy's Thanksgiving Day Parade*

--- November 22-25, 2023 ---

Since 1924, the Macy's Thanksgiving Day Parade has been the official kick-off to the holiday season!

Every year, the Emmy Award winning tradition is seen by more than 3.5 million people in New York and 50 million people at home, all tuned in to see the famous big balloons, a collection of amazing performances, one-of-a-kind floats and more! Join us to see one of the most popular events in New York City, the

# *Macy's Thanksgiving Day Parade*

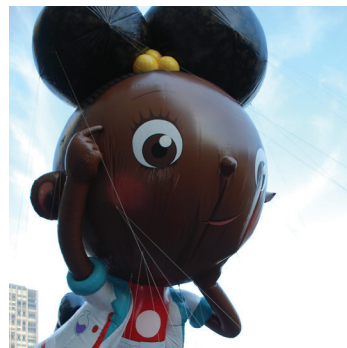
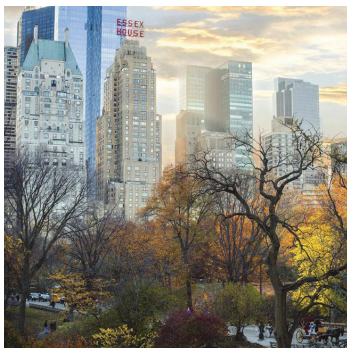


THE OHIO STATE  
UNIVERSITY

ALUMNI ASSOCIATION

## Program Highlights

- Three (3) nights' accommodations at the Le Meridien New York Central Park Hotel (suite upgrades available)
  - Check-in: Wednesday, November 22
  - Check-out: Saturday, November 25
- VIP parade viewing event and brunch at the JW Marriott Essex House Hotel Grand & Petit Salon located on the parade route
- Wednesday Welcome Reception with drinks and light appetizers
- Full breakfast at the hotel Friday and Saturday morning
- Unlimited use, 7-day MetroCard for New York public transportation, including the subway
- \$100 restaurant voucher to be used at your convenience
- Entrance to a Broadway Show (select one of 4 choices) to be used at your convenience
- Special Macy's Thanksgiving Day Parade souvenir
- Event lanyard, credential and ticket holder
- On-site SET travel hosts and hotel hospitality desk
- Taxes and gratuities on all included items

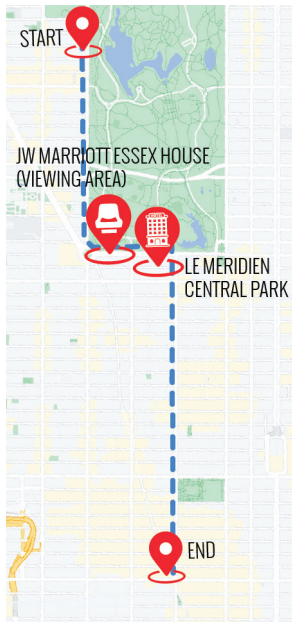


**Activity Level:** MODERATE. The tour includes walking to and from the parade viewing area. There is seating at the JW Marriott Essex House Hotel Grand & Petit Salon during the parade.

**T**hanksgiving  
is a time of  
togetherness  
and  
gratitude.

*-Nigel Hamilton*





## *Your Itinerary*

**DAY ONE** Check in to the Le Meridien New York Central Park Hotel. Take in the city sights at your leisure before an evening Welcome Reception.

**DAY TWO** Happy Thanksgiving! This morning enjoy VIP Parade viewing at the JW Marriott Essex House including brunch and cocktails.

**DAY THREE** Have breakfast at the hotel before embarking out on your own to explore NYC. Take advantage of the included MetroCard, Broadway Show, and restaurant voucher. Looking for ideas? Check out the Broadway Show option, the Radio City Rockettes Christmas Spectacular, or the Hop-On Hop-Off sightseeing bus tour. The sky's the limit!

**DAY FOUR** Departure Day - Enjoy breakfast at the Le Meridien before checking out and have a safe trip home!

## *Your Accommodations*

### **LE MERIDIEN NEW YORK, CENTRAL PARK**

Embrace the energy of NYC at Le Méridien New York, Central Park, where iconic attractions and world-class cultural experiences await. Exquisitely designed to reflect the ethos of New York—bold, cosmopolitan, vibrant and authentic—Le Meridien hotel is located in the heart of Midtown Manhattan, on West 57th Street between 6th and 7th Avenues. From this enviable vantage point, discover Central Park, Carnegie Hall, Rockefeller Center, MoMA and Columbus Circle. With sweeping views of Central Park at The Roof, Le Meridien's chic rooftop bar serving small-batch spirits, craft beers and global wine offering. With modern event space, Le Méridien hotel is an undeniably inspiring destination for celebrations in New York City.





Visit [OhioStateAlumniSportsTours.com](http://OhioStateAlumniSportsTours.com)  
or call 888.401.3050

**Mail to:**

Sports & Entertainment Travel, LLC.  
4910 W. 16th Street, Suite 105  
Indianapolis, IN 46224

# Macy's Thanksgiving Day Parade | November 22-25, 2023

**GUEST INFORMATION:**

Guest #1 Full Name (Title/Salutation): \_\_\_\_\_ D.O.B.: \_\_\_\_/\_\_\_\_/\_\_\_\_

Tour Badge Name: \_\_\_\_\_

Email: \_\_\_\_\_ Phone: \_\_\_\_\_

Address: \_\_\_\_\_

City: \_\_\_\_\_ State: \_\_\_\_\_ Zip: \_\_\_\_\_

Guest #2 Full Name (Title/Salutation): \_\_\_\_\_ D.O.B.: \_\_\_\_/\_\_\_\_/\_\_\_\_

Tour Badge Name: \_\_\_\_\_

Email: \_\_\_\_\_ Phone: \_\_\_\_\_

**RATES:**

**Main Program:**  Single (\$4,199)  Double (\$3,599)  Child (2-12) \$2,369

Please contact us if you are interested in triple or quad-occupancy.

**DEPOSIT** (Final payment will be charged on August 24, 2023):

# \_\_\_\_\_ guests for main tour (\$1,499/person) = TOTAL DEPOSIT: \$ \_\_\_\_\_

**DEPOSIT PAYMENT:**  MasterCard / Visa  American Express  Discover

Card #: \_\_\_\_\_ Exp. Date: \_\_\_\_/\_\_\_\_ CVV: \_\_\_\_\_

Name (As printed on card): \_\_\_\_\_

Billing Address (If different from above): \_\_\_\_\_

City: \_\_\_\_\_ State: \_\_\_\_\_ Zip: \_\_\_\_\_

By reserving and depositing on this program, I/we agree to the full Terms & Conditions as printed on the brochure and located on the cobranded site; I/we authorize SET to charge my credit card above to take the initial deposit and final payment for this tour.

Signature: \_\_\_\_\_ Date: \_\_\_\_/\_\_\_\_/\_\_\_\_

## Sports & Entertainment Travel, LLC Terms and Conditions, Release and Binding Arbitration Agreement

**Reservations & Payments:** Reservations may be made online or by phone. Deposits and/or final payment may be made by Visa, MasterCard, American Express, or Discover. All Reservations will be acknowledged on a first come, first served basis on a first-come, first-served basis.

**Litineraries:** Tickets, accommodation, literary inclusions, travel directors or expedition leaders, and arranged excursions are subject to change at any time due to unforeseen circumstances or those beyond Sports & Entertainment Travel, LLC's ("SET") control. Reasonable efforts will be made to operate programs as planned; however, adjustments, substitutions and changes may occur after the final itinerary has been issued. SET may, in its sole discretion, withdraw a program or any part of it, make such alterations or substitutions to the itinerary or program inclusions as it deems necessary or desirable, and pass on to program participants any expenditures or additional costs caused by any such adjustments, delays, or events beyond its reasonable control. SET is not responsible for the final payment of any program, but it will attempt to provide the best possible payment process.

**Rates:** Program rates are based on minimum participation levels, current fares (air, water, land, fuel surcharges), tariffs and currency values. While Sports & Entertainment Travel, LLC does everything possible to maintain the listed program rates, they are subject to change effective immediately upon posting unless otherwise specified by Sports & Entertainment Travel, LLC in the case of invoicing errors. We reserve the right to re-invoice with the correct pricing.

**Children:** SET welcomes the participation of children in most of its programs. However, in the event you do include your children or other minors for whom you serve as legal guardian ("Dependents") in your travel plans, you agree that you and we shall be at all times solely responsible for their care, actions, safety and protection during the program and any extensions. Should you have any questions whether a particular program or inclusion is suitable for your Dependent(s), please contact us.

**Not Included:** Unless otherwise specifically noted in the itinerary, program prices do not include the following expenses, which if applicable are your sole responsibility. Trip cancellation insurance and passenger travel protection plan, Domestic, International, and intercontinental air transportation, travel visas, passport, health and medical insurance, travel vaccinations, and other medical services, Airline ticketing fees, Airport transfers, Excess baggage charges, Any new value added or other taxes added to program costs by applicable governmental authority, Gratuities to drivers, guides, or ship's crew not specified. Meals and beverages other than those specified as being included in the itinerary. Sightseeing not included in the itinerary. Personal expenses such as laundry, communication charges and optional activities (which are subject to availability), Ship, air, or transportation fuel surcharges, if applicable. Any taxes other than the "included" taxes.

**Health and Fitness to Travel:** Some programs include physically active elements. To enjoy these programs as intended, a minimum level of fitness is required. Accordingly, you must be in good physical and mental condition to participate. You represent that you have no physical, mental or other condition, impairment or disability that may or will cause or create a risk of injury or other hazard to yourself or others in respect to any aspect of the program you have selected. SET may, in its sole discretion, limit, restrict or prohibit from participation in any aspect of any program any individual whom it considers to be impaired or unsuitable due to mental or fitness level. In addition, SET may, in its sole discretion and at the participant's sole expense, remove you from the program or restrict the program's activities if any individual whose physical or mental condition may pose a hazard to himself/herself or others, or otherwise impede the enjoyment of other program participants.

**Accessibility:** SET cannot guarantee that the transportation, lodging, and entertainment accommodations will be accessible to all persons regardless of their physical and mental condition. In addition, many of the activities involved in this travel involve walking for some distance on uneven ground or terrain as well as the ability to walk uphill without a walking stick or staff. Should any individuals seeking to participate in a travel opportunity need special accommodations to ensure their enjoyment of the trip, kindly provide notice at the time the reservation is submitted, and we will see if your participation is feasible. Please understand that the Americans with Disabilities Act is inapplicable outside the United States. SET needs a minimum of two weeks' notice to determine if the special needs of an individual traveler can be met through special arrangements. It is possible that minor modifications to the services can be provided, but only if SET is made specifically aware of anticipated needs. This notification should be made in writing no less than two weeks prior to the planned travel date. Neither SET, nor any of the providers of transportation, lodging, or entertainment services can provide special accommodations without this advance notice. Where an individual with certain specific needs will be traveling with a group, it is necessary for other members of that person's group to be available to assist as necessary. Neither employees of SET nor any suppliers of services can allow any of their employees to provide physical assistance to any guests. Assistance in the form of information will always remain available to all guests, however.

**Payments:** A deposit of 25% (or dollar amount close to 25%) of the reservation total is generally required. The deposit can be applied or credited to a future SET tour if SET is notified prior to the final payment date. The balance of your payment will be due 90 days prior to the departure date. Your final payment will be due 90 days prior to the departure date. Your final payment will not be received by SET until the final payment date. If you do not pay your final payment by the due date, SET may, at any time and with or without notice, cancel your reservation in its sole discretion with no right of refund. Travel packages booked within 90 days of the tour's start date will require full payment upon booking and are non-refundable.

**Cancellations, Refunds and Changes:** Cancellations made more than 90 days prior to travel will not receive a refund, however deposits can be applied or credited to a future trip with SET (school-specific athletic fan travel events excluded). Any cancellation request after 90 days prior to travel will result in a refund of the deposit but will not be available for any other program. SET will not be responsible for cancellations or changes to the program due to the following: act of God, natural disasters, pandemics, epidemics, personal or medical emergencies. Refunds cannot be issued as a result of these circumstances. If an event is cancelled or postponed for any such reason, we will refund any monies we can recoup from suppliers. Any name changes or changes to package arrangements made after registration are subject to an additional fee. No name changes will be accepted within one week of travel. No refunds will be issued for unused services provided to the participant, including but not limited to transportation, tickets, events, and other tour features. If an event is postponed, SET will do its best to duplicate the original reservation, however, the components of the reservation, such as accommodations, transportation or tickets, could be different.

**Limitation of Responsibility:** SET, its shareholders, directors, officers, employees and affiliates (collectively "SET"), does not own or operate any entity which is or does provide goods or services for your trip including, for example, ownership or control over hotels or other lodging facilities, airline, vessel, bus, van, or other transportation companies, local ground operators, providers or organizers of optional excursions or equipment used thereon, food service or entertainment providers, or even if SET or its employees, agents, subcontractors and affiliates are involved in the provision of any of the above services. SET is not responsible for any injury, loss, or damage to person or property, death, delay or inconvenience (collectively "losses") in connection with the provision of any goods or services occasioned by or resulting from, but not limited to, acts of God, acts of government, force majeure, acts of war or civil unrest, insurrection or revolt, strikes or other labor activities, criminal or terrorist activities of any kind, or the threat thereof, financial failure, insolvency or delay by suppliers, equipment or overcrowding, structural or other defective conditions to hotels or lodging or vessel facilities, mechanical or other failure of any of the means of transportation, or any failure of any transportation mechanism to arrive or depart timely or safely, dangers associated with or bites from animals, pests or insects, marine life or vegetation of any sort, dangers incidental to recreational activities such as scuba diving, snorkeling, paddle boarding, surfing, swimming, kayaking, sailing, canyoning, rafting, hiking, bicycling, rock climbing, etc., sailing problems, food poisoning, lack of access to or quality of medical care, difficulty in evacuation in case of a medical or other emergency, illness, riot or other epidemic or outbreak, or any other cause beyond the direct control of SET. In addition, I release SET from its own simple negligence and assume all risk thereof. SET is not a ticket broker and will not be responsible for the sale or resale of event tickets unless otherwise specified in the package details.

**Travel Insurance:** SET strongly recommends that you purchase travel and cancellation insurance to protect your investment in the event of unexpected or unforeseen circumstances. In addition, we recommend that you consider obtaining a policy(ies) that will cover some or all losses associated with damage or loss of luggage or personal effects. If you do not have, but are interested in purchasing, travel and cancellation insurance, please contact us immediately.

**Cancelled or Postponed Programs:** All programs are subject to cancellation or postponement by SET prior to the scheduled departure date for such reasons as, but not limited to, insufficient participation, or logistical problems that, in SET's sole judgment, may impede program operations or represent conditions or events that may expose program guests to undue risk of harm, injury, damage or inconvenience. In the event of program cancellation or postponement by SET, SET may offer you alternative arrangements such as the option to join another tour on a different date or to a different location. If the price of your alternative booking is lower than your original booking price, SET will refund the difference. If it is higher than your original booking price, SET will refund the difference and issue you a check for the difference. All cancellations or postponements are subject to the terms of the Limitation of Responsibility and Cancellations, Refunds, and Changes clauses. SET shall refund all payments made to SET at the time of cancellation should the alternative arrangement not be offered.

**Travel Advisories:** The State Department and the Centers for Disease Control periodically issue statements and advisories about risks to travelers. These statements are country specific and contain important information. The State Department may also be found at [www.state.gov](http://www.state.gov). SET strongly encourages everyone to review the advisories.

**Weather Statement:** Postponement, relocation, or cancellation of events due to weather conditions is beyond control of SET and refund or exchange for such events will not be issued. If an event is canceled or postponed due to weather, we will not be responsible for accommodations, transportation or tickets beyond the original scheduled date of the event. We can only provide refunds to the extent that such refunds become available to us.

**Travel Documentation:** All guests are responsible for possessing and maintaining necessary travel documents. These documents shall be valid under state, federal law and as required by foreign countries being visited. SET is not responsible for providing travel documents to any country. SET may, at its sole discretion, cite and enforce the terms of any applicable law or regulation that requires any individual to possess certain travel documents to enter a country. Participants' commitments to SET, which shall use commercially reasonable efforts to provide answers as a courtesy, provided that it shall remain your sole responsibility and obligation to obtain and verify that you have all required travel documents, including visas, necessary and appropriate for the program (location) and sufficient blank pages in your passport for visas and immigration stamps. In addition, some countries require your passport have an expiry date of not less than six months after your intended return to the United States, and that it be valid for at least three months beyond the intended departure date. If your passport or other travel document expires or is restricted or restricted or reentering the United States at the conclusion of the program. If travel documents fail to meet these requirements, boarding of aircraft or ship to any international destination may be denied and entry into such countries may be denied.

**Hotel Accommodations:** SET shall provide room accommodations within the parameters set forth by package options and purchase. Any additional incidental charges incurred by travel guests will be the sole responsibility of the guest. Incidental charges may include, but not limited to, telephone calls, laundry, minibar, mini bar, and other services or restrictions. Participants acknowledge that their purchase of a package by means of a purchase order, contract, or similar sales agreement, no more than four (4) guests shall reside in one hotel room. At least one guest over the age of 18 must be present per every three (3) children. No more than three (3) children may be accommodated in one (1) hotel room, subject to additional fees. More than four (4) guests to a room may be subject to additional fees beyond our SET's Terms and Conditions, [www.sportsandentertainmenttravel.com](http://www.sportsandentertainmenttravel.com) and the Hotel's Guest Policy.

**Tour Specific Terms & Conditions:** Participant will acknowledge tour specific terms & conditions when completing a reservation. Tour specific terms & conditions will be noted on the participant's order confirmation for reference. In the event that participants are unable to view a tour specific terms & conditions, they may be contacted by email or phone to collect this information. Any and all information provided to SET will be kept confidential and will, except for legal requirements, not be given out to a third party without the guest's consent.

**Data Rights, Permissions, Privacy Policy:** All participants acknowledge upon deposit or full payment of an elected package that any data collected, image, or likeness acquired from your use of the website is the sole and exclusive property of SET and may be used at the discretion of SET for purposes including, but not limited to social media, advertisements, and promotional materials without compensation to participant. Personal information may be required for payment, travel insurance, and/or hotel reservations for SET. SET will not collect the guest directly via email or phone to collect this information. Any and all information provided to SET will be kept confidential and will, except for legal requirements, not be given out to a third party without the guest's consent.

**Other:** Dates, program details and costs are based on tariffs, exchange rates and other information current at the time of printing, but are subject to change at any time. While we do not anticipate material revisions of the itinerary or its included features, we do reserve the right to substitute accommodations or modes of transportation and to make any changes in the itinerary SET, if in our sole discretion we deem it necessary or desirable. In that case any additional expense or cost shall be paid by the individual guest. Your baggage and personal effects are your sole responsibility. All items may be checked at any time and without notice, modify these terms and conditions, and any modification so made will be effective for all reservations made from and after the posted Effective Date. In the event any term in these terms and conditions is deemed unenforceable the unenforceable clause shall be interpreted to give effect to the parties' intentions to the greatest extent possible, and all other provisions hereof shall remain fully enforceable according to their terms.

**Baggage:** Air carriers impose weight and weight/volume restrictions on the number of pieces, size and weight of luggage and may reject or impose additional fees on luggage exceeding such limitations or restrictions. All such fees are your sole cost and responsibility. In addition, regardless of location or transportation method, your baggage and personal effects are and shall at all times be at your sole risk throughout the entire program. Please check with your air carrier for other applicable baggage restrictions and limitations.

**Binding Arbitration:** I agree that any existing, arising, or arising to this contract, the internet, the website, the brochure, or any other literature concerning my trip, or the trip itself shall be resolved exclusively by binding arbitration in Indianapolis, Indiana, or elsewhere, according to the then existing commercial rules of the American Arbitration Association or pursuant to the Comprehensive Arbitration Rules & Procedures of the Judicial Arbitration and Mediation Services, Inc. (JAMS). Such proceedings will be governed by substantive (but not procedural) Indiana law. The arbitrator and not any federal, state, or local court or agency shall have exclusive authority to resolve any dispute relating to the interpretation, applicability, enforceability, concisability, or formation of this contract, including but not limited to any claim that all or any part of this contract is void or voidable. By agreeing to these terms and conditions, both parties are waiving their right to a trial by jury or arbitration conducted in accordance with the Federal Arbitration Act. Agreements to Family Agreements. This Arbitration Agreement may be amended or modified in writing by both parties. This Arbitration Agreement shall be binding on all members of a class or other joint action.

**Acceptance of Contract:** Any document to SET, including but not limited to deposits or full payments constitute your acknowledgement of and agreement to these Terms and Conditions, Release and Binding Arbitration Agreement set forth above and more specific tour documents.

Sports & Entertainment Travel's full terms and conditions can be found on the co-branded website. Copyright © 2022 Sports & Entertainment Travel, LLC

*Be there as all eyes  
turn to the streets  
of Manhattan for  
the annual parade of  
celebrities, cheerleaders,  
clowns, marching bands,  
and Broadway  
performances.*



Book Now at  
[OhioStateAlumniSportsTours.com](http://OhioStateAlumniSportsTours.com)  
or call 888.401.3050



THE OHIO STATE  
UNIVERSITY

ALUMNI ASSOCIATION

The Ohio State University Alumni  
Association  
Longaberger Alumni House  
2200 Olentangy River Road  
Columbus, OH 43210