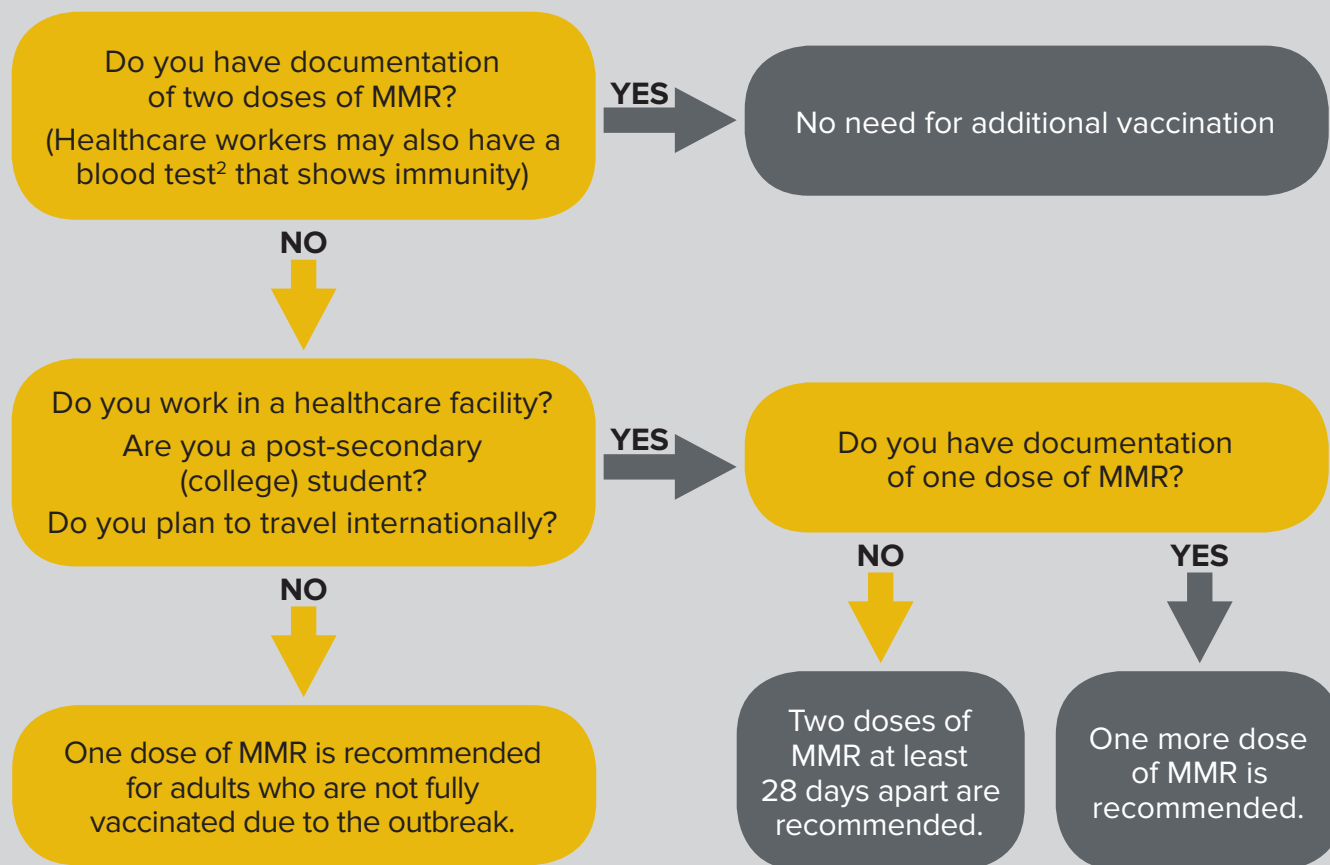


Should I be vaccinated?

Recommendations¹ for Ohio State faculty, staff and students for receiving the measles, mumps and rubella (MMR) vaccine

University officials have been working closely with our on-campus experts in infectious diseases and epidemiology, our colleagues from Columbus Public Health, the Ohio Department of Health and the Centers for Disease Control and Prevention (CDC) to formulate a plan to combat the outbreak and proactively provide the university community with guidance on how to stay as healthy as possible. The flow chart below will help you determine what steps you need to take.



¹These recommendations have been developed following consultation with the Centers for Disease Control and Prevention (CDC), the Ohio Department of Health and Columbus Public Health.

²A blood test is used to confirm immunity. It is not routinely ordered for patients. However, some healthcare providers may have been tested.

